



OAKTON HIGH SCHOOL

Marching Cougars

REGISTRATION 2023-24

PART A: MB REGISTRATION & INFORMATION PACKET 23-24

Forms due **May 15**

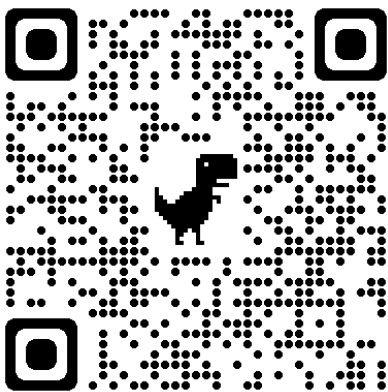
Summer camp fee due **July 31**

Course fee due **August 31,**

Questions? Contact forms@oaktonbands.org

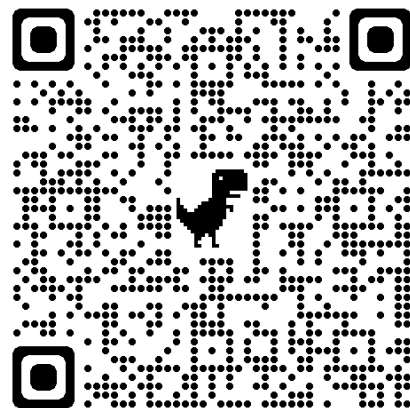
1. **Review** the information contained in this packet.
2. **Download** and/or print the companion Part B: MB FORMS PACKET 23-24
3. Make sure ALL forms are **complete and signed** using the checklist
4. Login to register and **upload** all forms **using your student's @fcpschools.net email address.** Using this address keeps your student's information secure.

Complete and/or
download forms at:



oaktonbands.org/forms

Register for Marching Band and upload*
completed forms at:



<https://forms.gle/Q9moy4HDcxNErpyC8>

*You must use your student's @fcpschools.net account to register and upload forms.

Marching Band Registration Checklist

Joining Marching Band? THAT'S GREAT! While our marching band registration procedures have moved into the digital age, we want to make the process as easy and friendly as possible. All forms can be completed online and/or downloaded for printing at: oaktonbands.org/forms **Once all forms are completed and signed, please use your student's @fcpsschools.net email login to register for marching band by uploading all forms.** Questions? Email forms@oaktonbands.org

Complete Marching Band Forms:

- Marching Band Commitment Form (required)
- Photo Opt-Out (optional; if you prefer that no photos of your student be shared)
- FCPS Field Trip Driver's License and Vehicle Insurance Information Form (required). This form is necessary in case of the need for an emergency pickup/dropoff to/from games or competitions.
- Color Guard ONLY - Color Guard Handbook Agreement Signature Page (required)

Complete Basic Medical Forms:

- Emergency Care Form (required)
- Health Information form (required)
- Over the Counter Medications (required)
- Medical Disclosure to Parent Chaperones (strongly recommended, if applicable)
- Color Guard ONLY (required by start of camp, download at oaktonbands.org/guard)
 - VHSL Physical Form (required, must be dated after May 1, DUE July 31)
 - FCPS Concussion Education Certification (required)

Complete As Needed Medical Forms (see medication procedures detailed later in this packet):
If your student will require any medications during practice and/or band camp, these must be completed and **SIGNED BY A PHYSICIAN**, as applicable.

- Medication Authorization Form
- Inhaler Authorization Form
- Epinephrine Authorization Form

Be on the lookout for: Competition/Travel/Field Trip Forms that will be required at a later date and sent as a package.

Upload your Forms: <https://forms.gle/8wNTdzFGH8SxJcMbA>

- Log in **using your student's @fcpsschools.net** email address. Other logins will not work.
- Complete the Google Form for Marching Band registration, you will then be able to upload forms in the requested fields.
- Upload ALL applicable forms where requested from this checklist. **Make sure they are SIGNED.**

Pay Fees: Will be payable via [MySchoolBucks.com](https://myschoolbucks.com). Or pay by check, payable to OHS and mailed to Oakton High School, ATTN: Dr. Van Valkenburg, 2900 Sutton Road, Vienna VA 22181

- Marching Band Course Fee DUE August 31: \$200
- Marching Band Summer Band Camp Activity Fee DUE July 31: \$225

Stay Informed.

- Sign up for the Downbeat Newsletter by texting BBOHS to 22828
- Sign up for the Remind text messaging system by texting OAKTONBAND TO 81010

Oakton High School Band Key Dates 2023-24

All Band Members:

September 7 and 14: Concert uniform exchange for all students, 5:45pm

September 9, 8:00am-3:00pm: All Band Members Tag Day Fundraiser

October 2: Senior Regional Orchestra Auditions, Thomas Jefferson HS

November 9-11: Senior Regional Orchestra Event, Wakefield HS

January 6: All District Band Auditions, McLean HS

February 1-3: All District Band Event, HOST Oakton HS

February 24: All-Virginia State Auditions, James Madison University

March 15-16: High School VBODA Concert Band Assessment, Washington-Liberty HS

April 19-20: Solo & Ensemble Festival: Rachel Carson MS

April 18-20: All-Virginia Band Event, Richmond, VA

Concerts:

Fall Concert, **November 15**

Holiday Wonderland Children's Concert, **December 2**

Winter Concert/Mass Chaos, **December 14**

Pre-Assessment Concert, **February 28 & 29**

VBODA Assessment, **March 15 & 16**

Jammin Oakton Jazz Cafe, **May 22**

Spring Concert, **May 23**

Band Council Car Wash Fundraisers 9a-1p

July 8: Freshmen and Juniors, Navy Elementary

July 15: Sophomores and Seniors, Oakton Elementary

July 22: All classes, Navy Elementary

Marching Band (MB)

May 4 and 9: Color Guard "Try It" Events, 3:15-5p

May 15: Mandatory Marching Band Meeting and registration forms due, 7p

July 4: Fairfax City July 4th Parade (tentative)

July: Percussion Clinics for all MB Percussionists

July 29, 4p: Field lining (to earn band service hours) at 4pm, Rain date, July 30

July 31: MB Camp fee due \$225 in MySchoolBucks

August 31: MB Course fee \$200 due in MySchoolBucks

July 31 - August 11: Monday through Friday, approx. 7:30am-5:45pm: MB Practice

July 31, 8:00-9:00am: New Parent Reception

August 12: MB Field Trip to Splashdown Water Park

August 14 - 18: Monday through Friday, times TBD: MB Practice

November 3: Marching Band Photos (Individual and Group shots, before away game)

Football Home Games

August 25th, 7p: v. Langley, Cougar Kickoff

August 31st, 7pm: v. Fairfax

September 22nd, 7pm: v. Centreville, Sr. night

October 6th, 7pm: v. W. Potomac, Homecoming

October 20th, 7pm: v. Westfield

November 3rd, 7pm: AWAY v. Chantilly

Competitions (specific times and locations to be announced, save the entire day for these events)

September 16th

September 23rd

October 7th

October 14th (Tentative) Oakton Classic, HOST

October 21st OR 28th, (Tentative) VBODA State Marching Band Assessment

General Band and Guard Information

We've all been new to the program at some point and understand that there is a lot of information being shared. Current band students are beginning to contact rising 9th graders to answer questions about marching band. If no one has reached out, please contact our BBOHS President at president@oaktonbands.org with your contact details. We will set you up with an experienced marcher. If you're a parent with questions, please reach out, we're always happy to talk. Program, academic and instrument questions should be sent to Dr. VanValkenburg at director@oaktonbands.org

Here is some basic information to get you acquainted with our program.

Band Auditions (for band class placement): The first step to becoming part of the OHS Band program is to be placed in a band--either Concert 2, Concert 1, or Symphonic. Many of your students have auditioned already. If your student has not auditioned yet, please contact the band director, Dr. VanValkenburg (director@oaktonbands.com).

Oakton Band Website, Social Media, Communications: Check out our website at oaktonbands.org to find out about all things Oakton Band. We've worked hard to make it your go-to source of information.

- **Facebook:** @oaktonbands.org
- **Instagram:** @oaktonhsbands
- **Downbeat:** Constant Contact newsletters are our main mode of communication. You will receive announcements, updates and reminders via the Downbeat every Sunday from early August through the end of the school year. Please subscribe by texting BBOHS to 22828
- **Remind:** Last minute reminders and announcements are sent (only as necessary) via text through Remind. Please subscribe by texting OAKTONBAND to 81010
- **Discord:** Download the Discord app from your device's app store and have your student reach out to section leaders, band council or drum majors to get a link for an invitation to the app. Discord is owned/operated/managed by our Band Council. Parents may also join. *Disclaimer:* The DISCORD app is rated 18 and over and geared to gaming so you will see that verbiage and icons. Our channel is moderated by students and to be used only for band communication among students/parents.

Uniforms: Each student must wear the appropriate attire for all performances. Marching and Guard Uniforms are provided by the school as a part of your fees. Concert uniforms will be purchased by parents. Information on concert attire is available at the end of this packet.

- **Marching Band:** Marching uniforms, marching shoes, practice shirts and show shirts are provided by the school. All marchers wear the marching uniform (jacket, bibs and hat) for competitions and football games and are provided solid colored t-shirts for practice. Personal marching shoes (Dinkles), practice shirts, show shirts and rental of the uniform are included in the marching band fee. Students will be measured/fitted for marching uniforms during band camp. Families pay to dry clean the uniform as requested, usually once or twice a marching season. Students must bring long, black dress socks to every event to wear with their Dinkles. Students are required to have all hair tied back neatly under their marching band hat using hair ties, clips and pins that match their hair color. Please purchase any required accessories before the first game or competition. No earrings, nail polish or jewelry are allowed.
- **Color Guard:** Costumes and shoes for Color Guard will be ordered and parents will be told about costume and uniform expectations at Color Guard sign-up. Color Guard students are provided with

the same colored practice t-shirts as the instrumentalists for practice.

- **Concert Band:** Parents will order their student's concert attire from our vendor (details are at the end of this packet). Clothing choices offered will be tuxedos, long black dresses and black top/bottom separates. All students need closed toe, black dress shoes and solid, long, black dress tights/socks.
- **Jazz Band:** Students will wear their concert attire and a white tuxedo jacket/sequin cummerbund provided by the band.

Marching Band Rehearsals: After-school practices run from the beginning of the school year through the last competition or home game in early November. Practices are held after school, Tuesday through Thursday from 3:15 until approximately 5:45pm and sometimes on Friday in preparation for an evening football game. Some color guard rehearsals can occur on different afternoons/evenings from marching band practices because of Coach availability.

Marching Band Competitions: Marching band competitions are like track or swim meets where different schools compete and perform their show. For the band, competitions are their "game days." Competitions need a lot of logistical support, so families should plan to volunteer for at least one. Detailed competition schedules will be released the week before. Students report in show shirts and khakis or other clothes, as directed. Students may be gone all day.

We will also be hosting our own marching competition, the 'Oakton Classic,' on October 14. This will be an "all hands on deck" volunteer event for Marching Band members and their families.

Concert Band Rehearsals: Begins in November, after the Marching Band season. Students will have practice after school one day a week from approximately 4:15 to 5:30 PM, with the day depending on which band class they participate in.

Jazz Band Classes: Begins in November, after the marching band season ends. Students who choose to participate in this graded class will practice two days a week, immediately after school.

Color Guard and Winter Guard: Both concert band and non-concert band students can participate in fall Marching Band as part of the Color Guard. The Color Guard is a section of the Marching Band that uses flags, rifles and sabres along with dance to visualize the music played by the band. In Marching Band competitions, the Color Guard is an essential component of the band and their performance is influential in the overall score.

Some students also choose to participate in Winter Guard, which is an indoor winter activity in which the guard performs to pre-recorded music during competitions. Winter Guard starts after the Fall Marching season is over in November. The first competition is in February and the last one is in April.

Band Awards: To recognize the efforts of our student musicians and guard groups and to encourage service to our community, the Oakton High School Band program uses a point system for a sequence of awards. Points are awarded for verified musical activities both in and out of the school and are cumulative from year to year.

Students use their accrued points to earn band letter/pin/etc. awards. Once these points are used for an award, they are deducted from the total. Unused points carry over from one year to the next. Students may earn more than one award in one year if they accrue enough points. This is the student's responsibility to manage, and they are encouraged to review the award policy early enough in the year in order to participate in necessary band events before they run out.



Color Guard Registration Info

Welcome to the Oakton High School Color Guard Family and Marching Cougars! This information sheet will help you complete the registration process for Marching Band/Fall Color Guard.

Please register using the same links and forms that are required for Marching Band. There are 3 additional forms required for Color Guard (see below). All registration forms should be completed by May 23.

Color Guard Jacket and Bag

All members of the Color Guard wear their Guard jacket for competitions and carry their supplies in a Guard bag. The price of the jacket and bag is \$100. Returning Guard members will pay \$10 for show name embroidery. These are available for purchase from the OaktonBands Shop here: <https://www.oaktonbands.org/shop>.

Color Guard Handbook

Color Guard members are required to review the Color Guard handbook and upload the **signature page** during registration. The handbook is available on the Color Guard page of the Oakton Bands website <https://oaktonbands.org/guard/>

VHSL Sports Physical and Concussion Education Program

All Color Guard members are required to upload a VHSL sports physical and Concussion Education Certificate prior to the beginning of Marching Band practices on August 1. **The VHSL form requires a visit to a physician for a physical, so please schedule an appointment NOW!**

- The VHSL sport physical can be accessed at <https://www.vhsl.org/vhsl-physical-form/> (Note the physical needs to be completed after May 1, 2023 and uploaded before August 1, 2023)
- The Concussion Education program can be accessed at www.fcps.edu/sports

Fall Guard Car Pools

An email will be sent to those who indicate interest in a Color Guard carpool on the Color Guard Registration Google Form to assist in self-organizing.

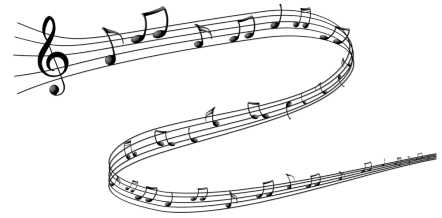
Guard Fundraisers

Earn Service Hours! Have fun with friends! Why are fundraisers important? To stay competitive in the Fall and Winter, we have to replace and buy equipment. Also, the program is growing. This is what the Boosters paid for this year among other things: Instructor fees for Coach Miles and his staff, bus transportation, towing expenses, rifles, sabres, floor, flagpoles, bolts, Ben supplies, tape, consignment shipping fees, advertising flyers, and much more.

Bring to All Marching Practices

- ☺ Colored Shirt (schedule to be determined): All new marching students will receive 5 different colored shirts on the first day of band camp. Students will be told which color to wear each day. This information will also be sent out in Sunday's Downbeat email.
- ☺ Lunch/Snack
- ☺ Water Bottle (many students bring a ½ gallon jug type container)
- ☺ Cooling neck gator or cooling neck wrap
- ☺ Light and breathable clothes. Students may also want a change of clothes as we hope to have access to the locker rooms during lunch.
- ☺ MUSICIANS: Instrument, reed, mouthpiece
- ☺ GUARD: Flag bag (practice flag, rifle, sabre)
- ☺ Music
- ☺ Dot Books/Drill Charts
- ☺ 3-4 Different Colored Poker Chips (will be provided for marching drill)
- ☺ Phone with "DrillBook" app downloaded (not required)
- ☺ Hat
- ☺ Sunglasses
- ☺ Athletic Shoes & Socks (and possibly an extra pair – we still march in light rain)
- ☺ Rain Gear (if forecast is for rain)
- ☺ Zip lock bag to keep cell phone/electronics dry
- ☺ Sunscreen
- ☺ Great Attitude, Positive Vibes and a Growth Mindset

Stay Informed with **THE DOWNBEAT and REMIND**



NEWSLETTER: The **Downbeat** is our Band Booster weekly email newsletter and communication tool. We use Constant Contact as the main avenue to conduct Band Booster and official band business.

TEXTS: We also use **Remind** messaging for more urgent and last-minute text messaging.

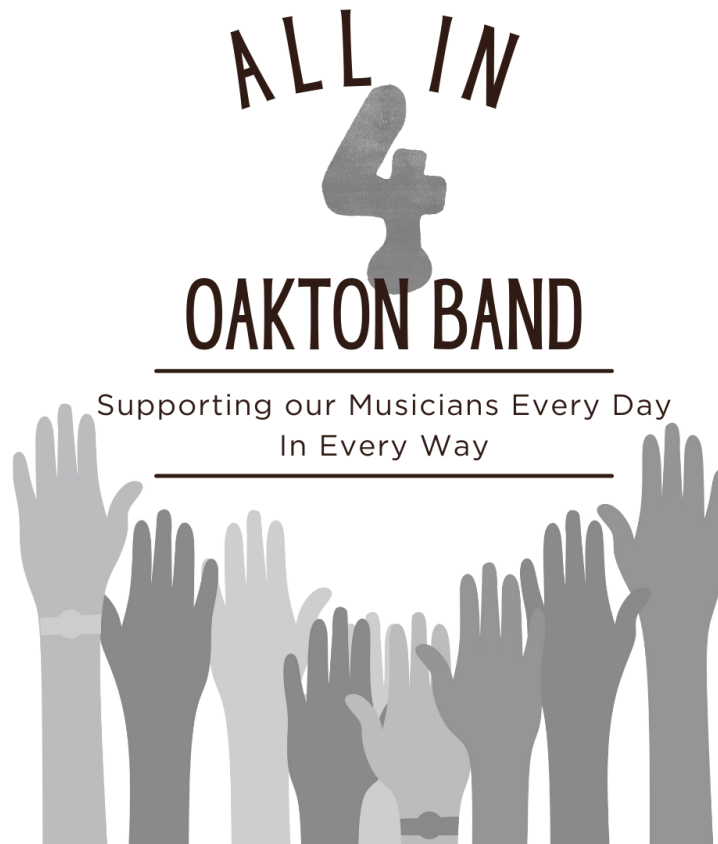
Students and parents should sign up for both right away in order to receive 23-24 school year information

SUBSCRIBE TO THE DOWNBEAT
BY TEXTING BBOHS to 22828

SUBSCRIBE TO REMIND
BY TEXTING OAKTONBAND TO 81010

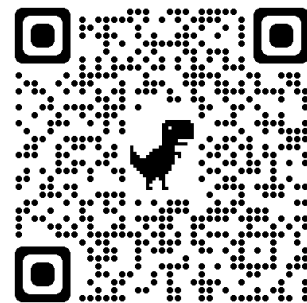
New Volunteer Hours for 2023-24

4 VOLUNTEER HOURS PER BAND FAMILY



Starting this year, we request that all band families commit to volunteer at least 4 hours of support for our band program.

Check out Volunteer Opportunities at
<https://signup.com/go/swRXcCr>



The band machine needs many hands to run smoothly. All of the work necessary to support our musicians is easy and fun. Guaranteed!



Oakton High School Band

FAIRFAX COUNTY
PUBLIC SCHOOLS

2900 Sutton Road Vienna, VA
22181
703-319-2746
oaktonbands.org

2023-2024 Oakton Band and Ensemble Fees

FCPS and the Oakton Band will not charge students a fee for any mandatory aspect of the Oakton Band program except for musical instrument and course material fees which are permitted by the Virginia Department of Education regulations. Schools cannot require a student to pay fees for course materials in excess of the amount approved by the FCPS School Board in Notice 5922.

The following is a description of the Oakton High School Band course material fees and FCPS-sponsored optional activity fees for participation in the music program for the upcoming season.

FCPS Required Fees	Amount	Who pays this fee?	This pays for...
Band Course Materials Fee Due September 30	\$40	EVERYONE in a band class	This fee covers <u>consumable</u> items/expenses for the bands/ensembles throughout the school year.
Marching Band Fee Due August 31	\$200	Marching Band members only	This fee covers <u>consumable</u> items/expenses for the marching band season. Examples of these items include band t-shirt, drill book, uniform, uniform accessories/maintenance, props, instrument accessories, music/copyright, etc.
Marching Band Summer Camp Activity Fee Due July 31	\$225	Marching Band members attending the August camps	This fee covers items/expenses for Summer Marching Band Camp, including team building activities, meals/snacks, field trips, camp materials expenses, band staff etc..

FCPS Sponsored Optional Activity Fee		
<p>This is a fee that students are expected to pay if they choose to participate in any activities/trips associated with the Oakton Band. This fee is determined and assessed based on the estimated cost of the trip/activity – including such costs as transportation, accommodation, registration, food, and other miscellaneous expenses.</p> <p>Examples of trips/activities would include Indoor Guard, the Spring Band Trip and Marching Band Assessments not already fully funded by FCPS.</p> <p>Students who do not pay the fees associated with a trip/activity will be ineligible to perform/participate in the trip/activity.</p>		
Optional Activity	Amount	Due Date

Spring Trip (March or April)	To Be Determined (~\$700-1000)	Initial deposit will be in October with subsequent payments to follow
Winter Guard (Dec – April)	To Be Determined (~\$450)	Beginning of December

Musical Instrument Rental Fee: This required fee only applies to students who play school-owned instruments and covers maintenance costs of those school-owned instruments. Students who are verified to be on free/reduced meal plans are to pay \$20.

Instrument Rental Fee	Amount	Due Date
Woodwinds and Brass	\$100	9/30
Percussion	\$60	9/30

Marching Band Accessories: Certain uniform items must be purchased separately by the students if lost or damaged. Examples of these items include replacement marching shoes, gloves, t-shirts, etc. The Oakton Band will sell these items at cost to facilitate the ordering process.

Concert Uniform Accessories: Each student will be responsible for the purchase of their own concert attire. Vendor and selection information will be shared at the beginning of the year. Estimates are \$100 for tuxedos and \$70 for dresses. All students will also need closed toe, black dress shoes (not marching Dinkles) and long, black dress socks/tights.

Individual Performance Events: There are opportunities throughout the school year for individual students to choose to audition and/or participate in other bands. Examples include the All-District or All-State Band and the Solo and Ensemble Festival. Audition or participation fees are often assessed for these opportunities by the sponsoring organization. The Oakton Band does not establish such fees, but the Oakton Band often assists in the collection of these fees from individuals who elect to participate and the submission of one group payment to the respective sponsoring organization. These fees are communicated at the time other information about these opportunities is communicated.

Payment Policies

MySchoolBucks

- o This is the preferred method of payment, however students have to be loaded into the system before being able to pay..

Check

- o Payments can be made out to **Oakton High School**. Please include the student's name and fee being paid in the memo line of the check.
- o Please put the check in a sealed envelope and write the first and last name of the student and the name of the fee (e.g. Jane Doe, Marching Band) Payments should be **handed directly to Dr. VanValkenburg**. Or mailed to the school as follows: Oakton High School ATTN: Dr. VanValkenburg, 2900 Sutton Road, Vienna, VA 22181

Refunds: Typically, fees paid are non-refundable once commitments and purchases have been made. These refund policies will be communicated separately as they relate to individual activities.

Need-based Financial Assistance is available for those in need of such assistance. Requests for financial assistance should be made directly to the Band Director prior to the due date for the related fee.

Oakton High School Bands

Medication Procedures for Practice/Trips

All student information is treated with strict confidentiality and records/forms are maintained in a secure environment. Access to these forms is by FCPS staff members ONLY and only when deemed necessary in an emergency situation.

Dispensing of Medications

- All medications will be dispensed by an FCPS staff member.
- Students must assume responsibility for reporting for medication at the pre-announced times and location.
- A log will be maintained by the FCPS staff.
- Parents are responsible for providing medication to FCPS staff with the prescription label (unless OTC) and in the original container. Each medication should be in a zip lock bag with the student's name clearly marked on the bag.
- Parents are responsible for providing the necessary SIGNED medication forms, including dosages/times. Most prescription medications require a doctor's signature, so please plan ahead.
- If a student carries an epi-pen or an inhaler, the parent must submit the required SIGNED authorization form at the beginning of marching band season for the medication files that travel with the band. The form submitted to the school clinic will not be given to the band.
- Parents should send ONLY the amount of medication needed for the duration of the trip. Do not send entire bottles of medicine.
- Parents are responsible for collecting the remainder of any medications upon the Band's arrival at Oakton High School at the end of the trip. Any medications left behind will be turned over to the school administration.

CONCERT UNIFORM ORDERING INFORMATION

We have partnered with Cousin's Concert Attire to provide our students with high quality and affordable concert uniforms for every student. **RETURNING TUXEDO-WEARING STUDENTS WILL NEED TO ORDER A BLACK LAYDOWN COLLAR TUXEDO SHIRT (ITEM 937BLK) FOR THE 23-24 SCHOOL YEAR.**

- Concert uniforms are required for all band students. **Our first band concert is in November** and all students should have concert attire in hand, fitted and ready to wear by that date.
- Our "Concert Uniform Exchange" will take place September 7 (Seniors/Juniors) and September 14 (Sophomores/Freshmen), bring any concert attire you have outgrown and/or browse what's available, used by prior students. Optional monetary donations toward our BBOHS "Black Sock Fund" will be accepted at this event.
- **Orders are REQUIRED to be made by October 1.**
- Measurement and sizing information is below. Note that some items require hemming upon arrival.
- Questions? Email uniforms@oaktonbands.org
- Students/families in need of financial assistance to purchase concert attire should contact Dr. V. Boosters have many extra tuxes and dresses for those in need of assistance.

Steps to order concert attire :

- Take accurate measurements of your student (see next page for instructions).
- Discuss preferences on concert attire (full or separates) with your student
- Visit concertattire.com
- Search by product name or product number
- Place order. Shipped directly to home for an additional \$16. Plan a group your order with other band friends to save on shipping!
- Unwrap and fit immediately upon receipt to allow time for exchanges. Pants come unhemmed.

FULL ENSEMBLES

Lucas tuxedo \$98 in all BLACK

BLACK laydown collar tuxedo shirt
No vest, no pocket square
BLACK tie
Adjustable sized pants
Delivered unhemmed
Product #3005



Christina dress \$62, flutter sleeve in black
Machine washable
Product #119



SEPARATES, choose one top and one bottom



Melony blouse \$27
Machine washable
Product #2201



Tuxedo shirt \$16, in black
Laydown collar, 1/4" pleated
Product #937BLK



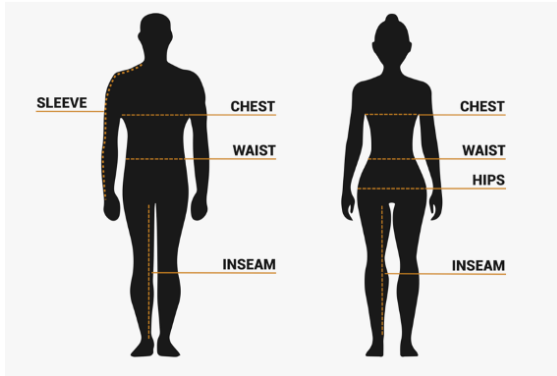
Tuxedo pant \$26
Adjustable sized pants
Delivered unhemmed
Product #3002P



Faith Bootleg pant \$34
Machine washable
Product #1122

MEASUREMENTS AND SIZE CHARTS

To take measurements, you can use a soft measuring tape (or a piece of string and a regular tape measure). Keep in mind that when you're measuring, you should have the tape measure or string snug, but not tight; you should be able to fit a finger under it.



CHEST/BUST: Females measure across fullest part of chest/bust, keeping tape measure even to the floor around the back
Males measure under arms, across the chest.

WAIST: Measure around smallest part of natural waist

HIPS: Measure around fullest part of hips

SLEEVE: Bend elbow, measure from center of back neck, across shoulder, down the arm, around point of elbow to the wrist bone.

EVAN TUXEDO COAT and PANT SIZING

GUYS TUX & SUIT COATS – CHART J												
SIZE	34	36	38	40	42	44	46	48	50	52	54	56
CHEST	31	33	35	37	39	41	43	45	47	49	51	52

SIZE (COAT LENGTH)	SHORT	REGULAR	LONG	EXTRA LONG
HEIGHT	5'7" and under	5'8" to 5'11"	6'0" to 6'4"	6'5" and taller

Sizes in shaded area add 20%. Sizes 58 and higher add 30%. We carry coats to size 66.

GUYS ADJUSTABLE TUX TROUSERS – CHART K									
SIZE	26	28	31	34	37	40	43	46	49
WAIST	25-26	27-29	30-32	33-35	36-38	39-41	42-44	45-47	48-50

TUXEDO SHIRT SIZING

Mens XS (13-13.5 Neck) (30-31 Sleeve)
 Mens XS (13-13.5 Neck) (32-33 Sleeve)
 Mens XS (13-13.5 Neck) (34-35 Sleeve)
 Mens XS (13-13.5 Neck) (36-37 Sleeve)
 Mens S (14-14.5 Neck) (30-31 Sleeve)
 Mens S (14-14.5 Neck) (32-33 Sleeve)
 Mens S (14-14.5 Neck) (34-35 Sleeve)
 Mens S (14-14.5 Neck) (36-37 Sleeve)

Mens M (15-15.5 Neck) (30-31 Sleeve)
 Mens M (15-15.5 Neck) (32-33 Sleeve)
 Mens M (15-15.5 Neck) (34-35 Sleeve)
 Mens M (15-15.5 Neck) (36-37 Sleeve)
 Mens M (15-15.5 Neck) (38-39 Sleeve)

Mens L (16-16.5 Neck) (32-33 Sleeve)
 Mens L (16-16.5 Neck) (34-35 Sleeve)
 Mens L (16-16.5 Neck) (36-37 Sleeve)
 Mens L (16-16.5 Neck) (38-39 Sleeve)
 Mens XL (17-17.5 Neck) (30-31 Sleeve)
 Mens XL (17-17.5 Neck) (32-33 Sleeve)
 Mens XL (17-17.5 Neck) (34-35 Sleeve)
 Mens XL (17-17.5 Neck) (36-37 Sleeve)
 Mens XL (17-17.5 Neck) (38-39 Sleeve)

CHRISTINA DRESS, MELONY BLOUSE and FAITH BOOTLEG PANT SIZING

GALS – CHART C								
SIZE	X-SMALL (0/2)	SMALL (4/6)	MEDIUM (8/10)	LARGE (12/14)	XL (16/18)	2XL (20/22)	3XL (24/26)	4X (28/30)
BUST	30 - 33	33 - 36	36 - 39	39 - 42	42 - 45	45 - 48	48 - 52	52 - 56
WAIST	23 - 26	26 - 29	29 - 32	32 - 35	35 - 38	38 - 41	41 - 45	45 - 49
HIPS	32 - 35	35 - 38	38 - 41	41 - 44	44 - 47	47 - 50	50 - 54	54 - 58